



Chhattisgarh Business Made Easy

Department of Commerce and Industries
Government of Chhattisgarh

December 2024

Chhattisgarh at a Glance



Location and Connectivity

- 9th largest State by area, borders 7 States, access to 510 million population
- Well-connected: 5 airports, 2,636 kms of rail network and 3,620 kms of national highways, Paradip port 550 Kms from Raipur



Economy

- 9% economic growth; GSDP of INR 5.05 lakh crore (~USD 61 billion), 1.7% contribution to India's GDP
- Per capita income of INR 1.47 lakh (USD 1756)
- Industry contribution to GSDP – 53.50% (India – 31%)



Well Established Industrial Base



Key Cities

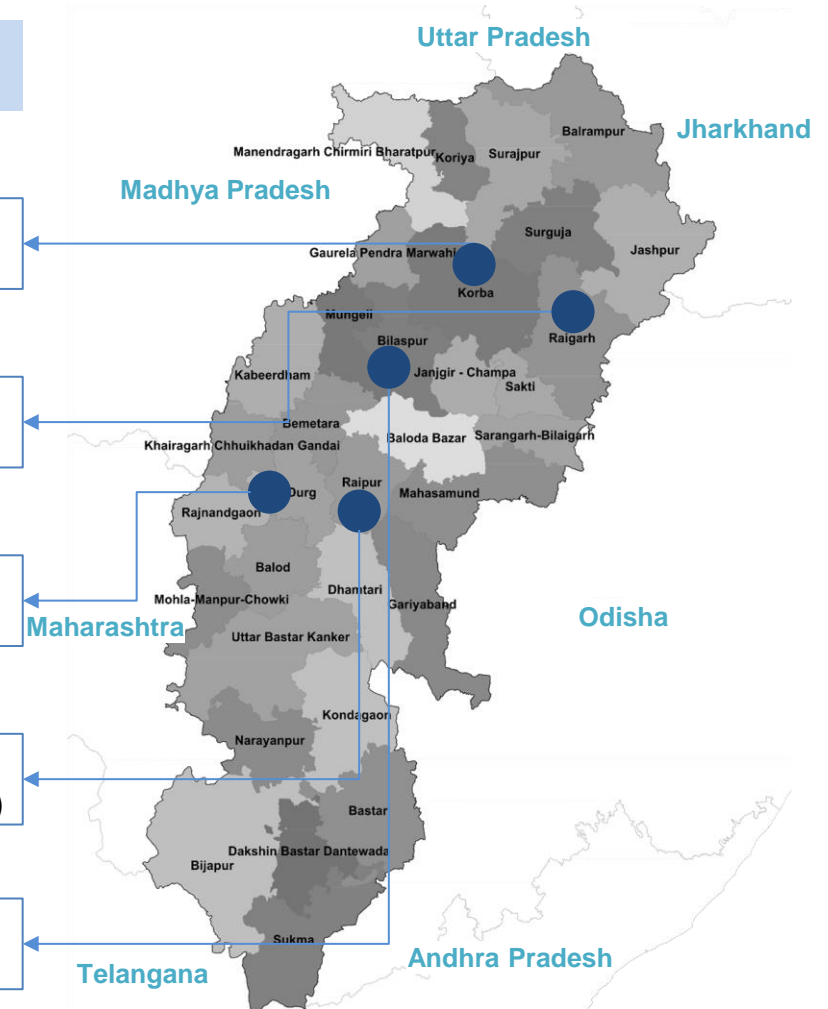
Korba
(Power Hub)

Raigarh
(Steel Hub)

Bhilai
(Steel City)

Raipur
(State Capital)

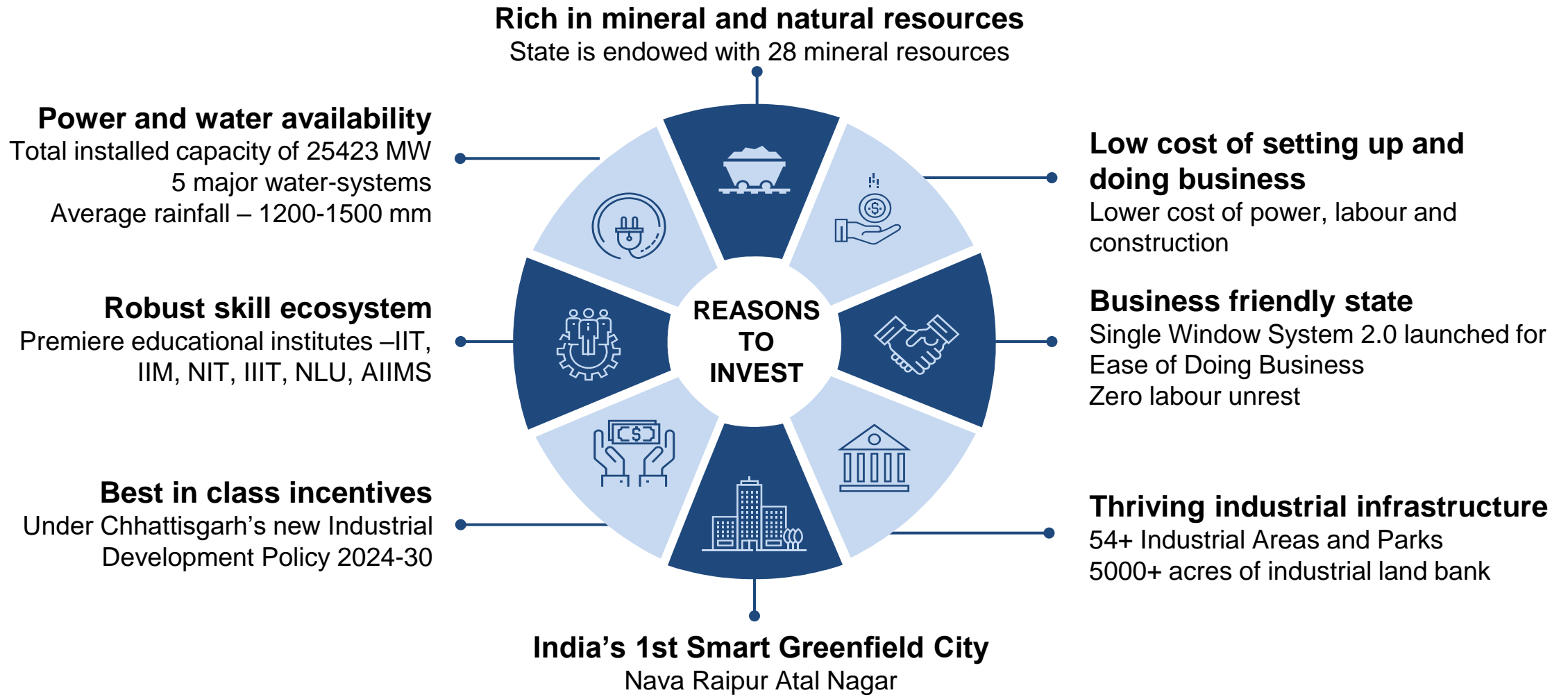
Bilaspur
(Legal Capital)



Chhattisgarh means “Thirty-Six Forts”

Industry contribution includes mining and quarrying

Chhattisgarh's Strength



Industrial Infrastructure



5000+ Acres

Industrial land bank available for allotment



Plug & Play Infrastructure

Available for electronics



54+ Industrial Areas

Well developed with internal roads, street lighting, water and power supply



MSME Technology Centres

Durg (Operational)
Bilaspur (Upcoming)

Established Sector Specific Parks

- Metal Park, Raipur
- Engineering Park, Bhilai
- Electronics Manufacturing Cluster, Nava Raipur
- Food Park, Dhamtari

Upcoming Parks

- Plastic Park, Raipur
- Textile Park, Janjgir-Champa
- Pharma Park, Nava Raipur
- Smart Industrial Areas in Janjgir-Champa and Rajnandgaon
- Food Parks in 10 districts across State
- Gems and Jewellery Park, Raipur

Ease of Doing Business



Chhattisgarh's BRAP assessment performance over the years

Year	2015	2016	2017-18	2019	2020	2022
Implementation score	62.45 %	97.32%	99.46%	99.44%	96.32%	93.75%
Feedback score	NA	NA	97.31%	28.71%	NA	NA
Rank/ Category	04	04	06	06	Aspirer	Aspirer

Key achievements demonstrating ease of doing business

Fully functional
Single Window
System

Functional
Central
Inspection
System

Integrated
System for
Online Building
Permits

Online land
allotment

Online system
for incentives

Validity of
Factory License
increased to 10
years

Education and Skill Ecosystem



Chhattisgarh is 1st State to enact Right to Skill Act

- Engineering - 1 Central Institute (CIPET), 4 Government, 2 autonomous-self-financed and 22 private institutes. Total capacity – 10,290
- Polytechnic – 32 Government and 14 private. Total capacity – 8,001
- Industrial Training Institutes (ITIs) - 197 Government and 113 private. Total capacity - 58,832
- MBA – 1,710 total capacity
- MTech – 1,104 total capacity
- MCA – 548 total capacity

Premiere Institutions



IIM Nava Raipur



IIT Bhilai



AIIMS Raipur



NIT Raipur



IIIT Nava Raipur



NLU Nava Raipur

Innovation and Startup Ecosystem



Key Startups



ZONE OF FRESH FOOD

Online store for spices



One Healthcare Solution

Advanced medical devices



EV technology solutions



Data analytics solutions for mining



Vertex Suite: All-in-one SaaS solution



Rice based ready to cook products



GimBooks

One-Stop Business app for invoice, E-invoices, GST Filings, others



Fintech Platform Financial Education and Investing



3D Printer and Electronics manufacturing

1400+

DPIIT registered startups in the State






Startup Package under

Industrial Development Policy 2024-30

- INR 50 crore corpus fund and INR 50 crore credit risk fund for startups
- Fiscal support in three stages:
 - Seed Funding: INR 5 lakh
 - Operational Funding: INR 3 lakh
 - Continuous Development Funding: INR 3 lakh
- Other fiscal support for rent, stamp duty, project report, quality certification, technical patent
- Non-Financial Facilities like simplification in labour laws, coordination with academic institutions, among others

Industrial Development Policy 2024-30 – Key Features



-  High growth **thrust sectors** with higher incentives including textiles, pharma, food processing, IT/ITeS, electronics, data centres, AI, robotics & computing
-  **Special package** for investments of INR 50 crore and above in plant and machinery for thrust sectors
-  First 5 units (under special package) with an investment of INR 200 Crore shall be considered as **anchor units** and will be provided additional incentives
-  Higher incentives for investment in remote areas to ensure **balanced regional development**
-  **Maximum limits** for overall incentives at 100% of FCI for manufacturing industries and 150% for service sector industries

Incentives under Policy

- Fixed Capital Investment Subsidy **up to 50%**
- Net SGST Reimbursement **up to 15 years**
- Electricity Duty Exemption **up to 15 years**
- **100%** Stamp Duty Exemption
- Training Cost Reimbursement equivalent to **1 month's wage**
- **75% EPF Reimbursement** for 5 years
- R&D Subsidy **up to Rs. 3 Crores**
- **50%** subsidy for ETP
- Among other subsidies

Note: Incentives vary according to investment size, development block and sector

Existing Industrial Footprints in Chhattisgarh



25,000+ MSME

Established in Chhattisgarh since State's formation

INR 2.8 Lakh Crore (~USD 23 billion)

Total Investment since State's formation

Iron, steel & aluminum



Engineering



Food Processing



IT/ITeS & Electronics





WELCOME TO CHHATTISGARH